



CITIZENSHIP
IN THE
Community

+ Jannelle Juarez, Hashley Esparza,
Galilea Esparza

REQUIREMENT 1

WHAT DOES IT MEAN TO BE A CITIZEN?

-A PERSON WHO LIVES IN A PARTICULAR PLACE OR BEING A MEMBER OF A GROUP OR ORGANIZATION.

WHAT DOES IT MEAN TO BE A GOOD CITIZEN?

-TO BE A GOOD CITIZEN IN YOUR COMMUNITY YOU MUST SET AN EXAMPLE TO YOUR PEERS BY WORKING HARD, VOLUNTEERING, VOTING, WORKING HARD, AND ALWAYS HAVING A GOOD ATTITUDE

DISCUSSION!

THINK ABOUT WHAT IT MEANS TO BE
A GOOD CITIZEN. HOW DO YOU AS
BOY SCOUTS REPRESENT YOURSELVES
TO YOUR COMMUNITY?

You will have a few minutes to think and
will need to share your responses.

CONT. OF REQUIREMENT 1

DISCUSS RIGHTS AND DUTIES. EXPLAIN HOW TO DEMONSTRATE GOOD CITIZENSHIP IN THE COMMUNITY.

RIGHTS

-FREEDOM OF SPEECH AND RIGHT TO PUBLIC EDUCATION

DUTIES

-VOLUNTEERING AND TAKING CARE OF YOUR SURROUNDINGS

OBLIGATIONS

-OBEYING LAWS AND PAYING TAXES

CONT. OF REQUIREMENT 1

DISCUSS RIGHTS AND DUTIES. EXPLAIN HOW TO DEMONSTRATE GOOD CITIZENSHIP IN THE COMMUNITY.

SCHOOL

-ATTEND REGULARLY, PAY ATTENTION TO TEACHERS < COMPLETE ASSIGNMENTS < AND STUDY

COMMUNITY

-OBEY LAWS AND COOPERATE WITH LOCAL RULES (SCHOOL ATTENDANCE, CURFEW ETC.)

SCOUTING UNIT

-PAY ATTENTION, PARTICIPATE, AND COOPERATE WITH PATROL LEADERS AND FELLOW SCOUTS

CONT. OF REQUIREMENT 1

DISCUSS RIGHTS AND DUTIES. EXPLAIN HOW TO DEMONSTRATE GOOD CITIZENSHIP IN THE COMMUNITY.

PLACE OF WORSHIP

-FOLLOW RULES AND EXPECTATIONS, BE PUNCTUAL AND ATTEND WORSHIP, TAKE ADVANTAGE OF EDUCATIONAL OPPORTUNITIES

REQUIREMENT 2a

IDENTIFY THE FOLLOWING LOCATIONS ON GOOGLE MAPS

- CITY HALL

- FIRE STATION No1

- HOSPITAL

- YUMA TERRITORIAL PRISON

<https://www.google.com/maps/@32.6729728,-114.6159104,12z>





26 Chart the organization of your local or state government



AZ State Senator District 4
- Lisa Otondo (D)



District 4 Map



AZ State Senator District 4
- Mark Kelly (D)
- Kyrsten Sinema (D)



26 CONT.

- + ❖ Arizona's 4th Congressional District
 - - Paul Gosar +



- ❖ Governor of Arizona
 - - Doug Ducey (R) +



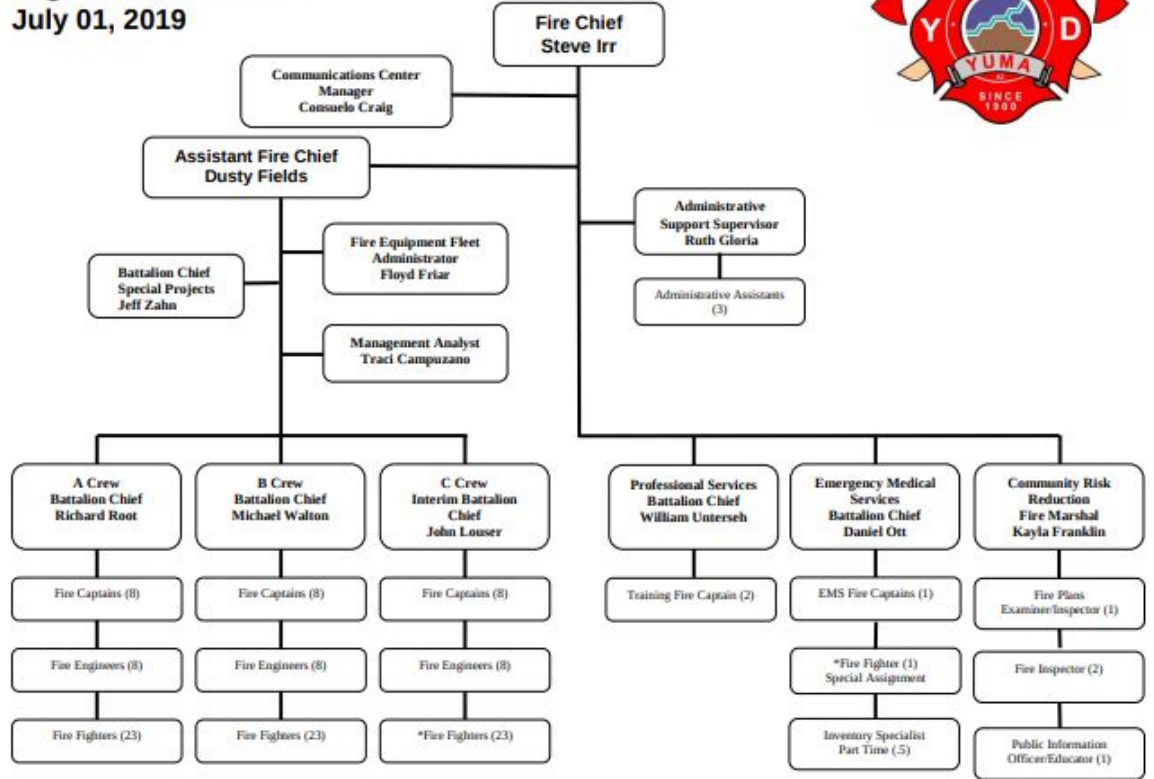


+

CITY OF YUMA FIRE DEPARTMENT ORGANIZATIONAL CHART BREAKDOWN

+

City of Yuma Fire Department Organizational Chart July 01, 2019



Requirement 3a and 3b Council video and discussion



<https://videoplayer.telvue.com/player/OXn5XvCPQgemD7cvXwSX1qzONyLLA3Uq?fullscreen=false&showtabssearch=true&autostart=false>

Discuss the issue being discussed at the meeting or do you agree with the issue being discussed?

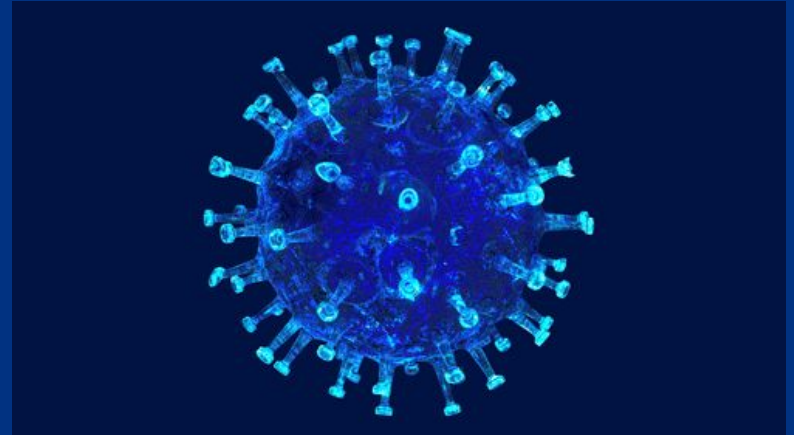


**NEW REGULATIONS TO
BICYCLES (2/3/21)
7:20-14:50**

Requirement 4 & 4a

Choose an issue that is important to the citizens of your community;

- - ❑ Issue: COVID-19
 - ❑ Ask or research which local government is responsible for this issue
 -
 - ❑ Health department
 - ❑ How has this issue affected your community?
 - ★ This could include schools , business , airlines, and farm workers.



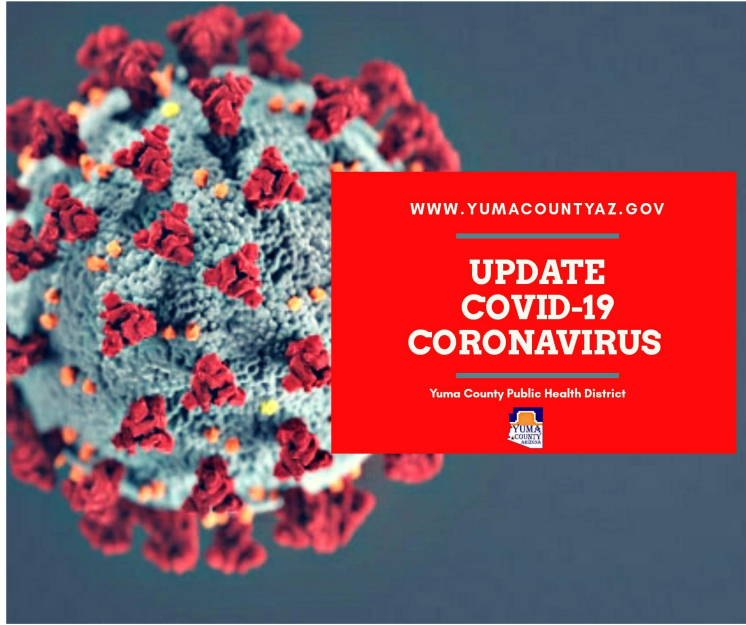
EFFECT ON WORKERS

BEGINNING OF COVID-19

COVID VACCINE

Requirement 4b

+



Where to find issues

- ❖ Public health groups
- ❖ Yuma health department updates

Link for more information

<https://www.yumacountyaz.gov/government/health-district/divisions/emergency-preparedness-program/coronavirus-2019-covid-19-yuma-county-updates>

The Joy of Giving Animated Short film



Discuss what this short film was about and how one person can have an impact in their community

Requirement 5



Requirement 6

COUNTY SERVICES

★ List some of the services that are funded by Taxpayers

Services	Why is it important
Education	<ul style="list-style-type: none">• Is important because the taxes, that are funded are to pay teachers
Parks	<ul style="list-style-type: none">• They provide the community an opportunity to have a locations to be active outdoors.
Schools	<ul style="list-style-type: none">• It provides the community with an opportunity to advance their education for free.
Food stamps	<ul style="list-style-type: none">• It's important for the reason being that it assists low-income families with purchasing groceries
Medicaid	<ul style="list-style-type: none">• Is beneficial for individuals who are not able to afford insurance on their income.

Requirement 7a

Volunteer Ideas

- Yuma Community Food Bank
 - Crossroads Mission
 - SHINE program



REQUIREMENT 7 & VOLUNTEER IDEA



SHINE / Boys and Girls Center



The Shine Program was created in the 2009 to promote citizenship, sportsmanship, and build youth of strong moral character. The program has helped and served one thousand elementary students, examples Afterschool activities, youth leadership program, and community clubs throughout the city of Yuma.

In 2020, Shine adopted the Boys and Girls Center. The Shine continues to teach us youth character education, fundamentals of sports, and skills.

SHINE VIDEO



More Information about SHINE

To learn more about how to complete hours of community service feel free to contact:

Luz Acosta

luza@hacy.org

Claudia Zavala

czavala@hacy.org

Office: (928) 318-5800

Direct: (928) 318-5801

If you want to visit and learn more about SHINE and Boys and Girls Center click the link

<https://www.theshineprogram.org>



REQUIREMENT 7c



★ An idea about other ways to volunteer at SHINE boy and girl center

★ To be determined on how to receive community service hours. Discussion about zoom volunteering or in person is being brought up.



Requirement 8

Develop a short speech

Instructions :

- **Develop a short presentation**
 - **about your community, culture, or features about Yuma**

- **What are some things you know about your community?**
- **What are some challenges we are facing with Covid-19?**
- **What is an interesting fact about SHINE?**



zoom
BREAKOUT ROOMS

The End

THANKS